

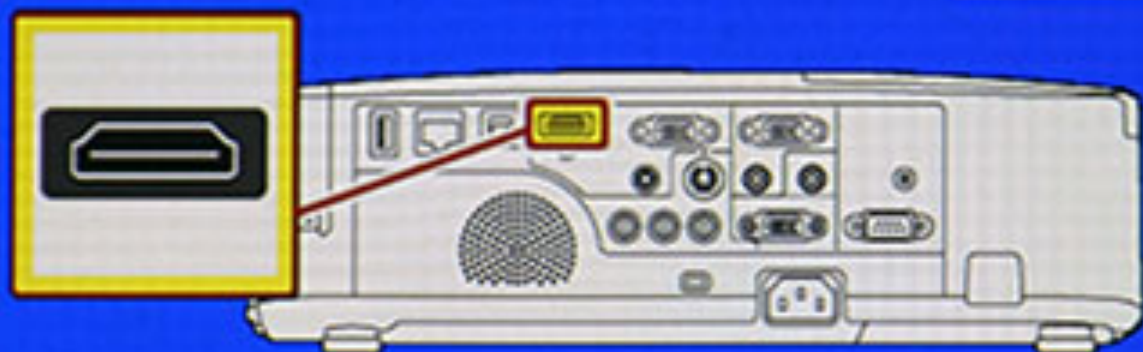
Why be a "Tech Buddy"?

Building Relationships with Faculty

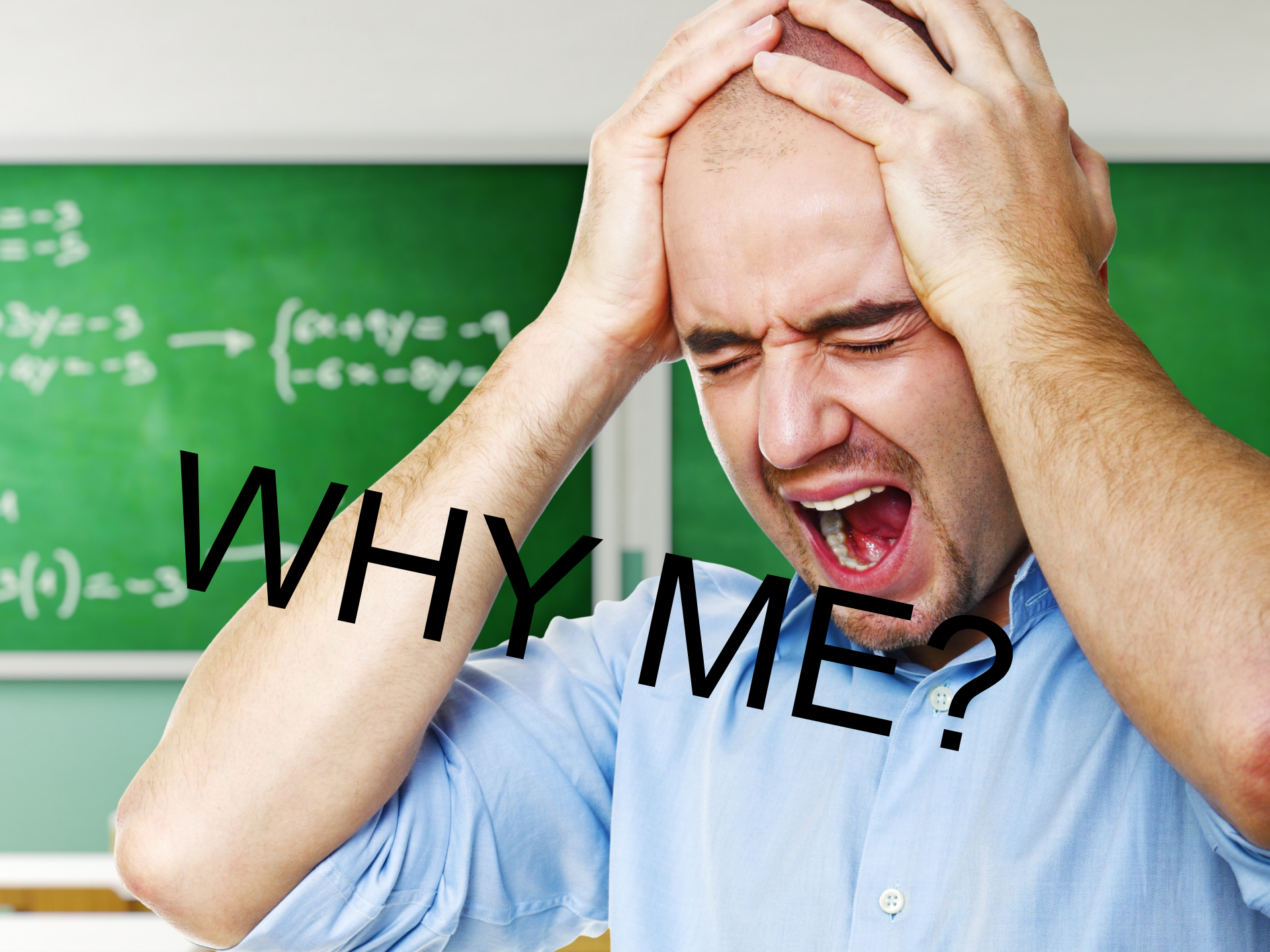
By Michelle Johnson

HDMI

NO INPUT



CHECK THE INPUT TERMINAL.



WHY ME?

$$\begin{aligned}x &= -3 \\y &= -5\end{aligned}$$

$$\begin{aligned}3y &= -3 \\4y &= -5\end{aligned} \rightarrow \begin{cases} 6x + 9y = -9 \\ -6x - 8y = -5 \end{cases}$$

$$f(x) = -3$$







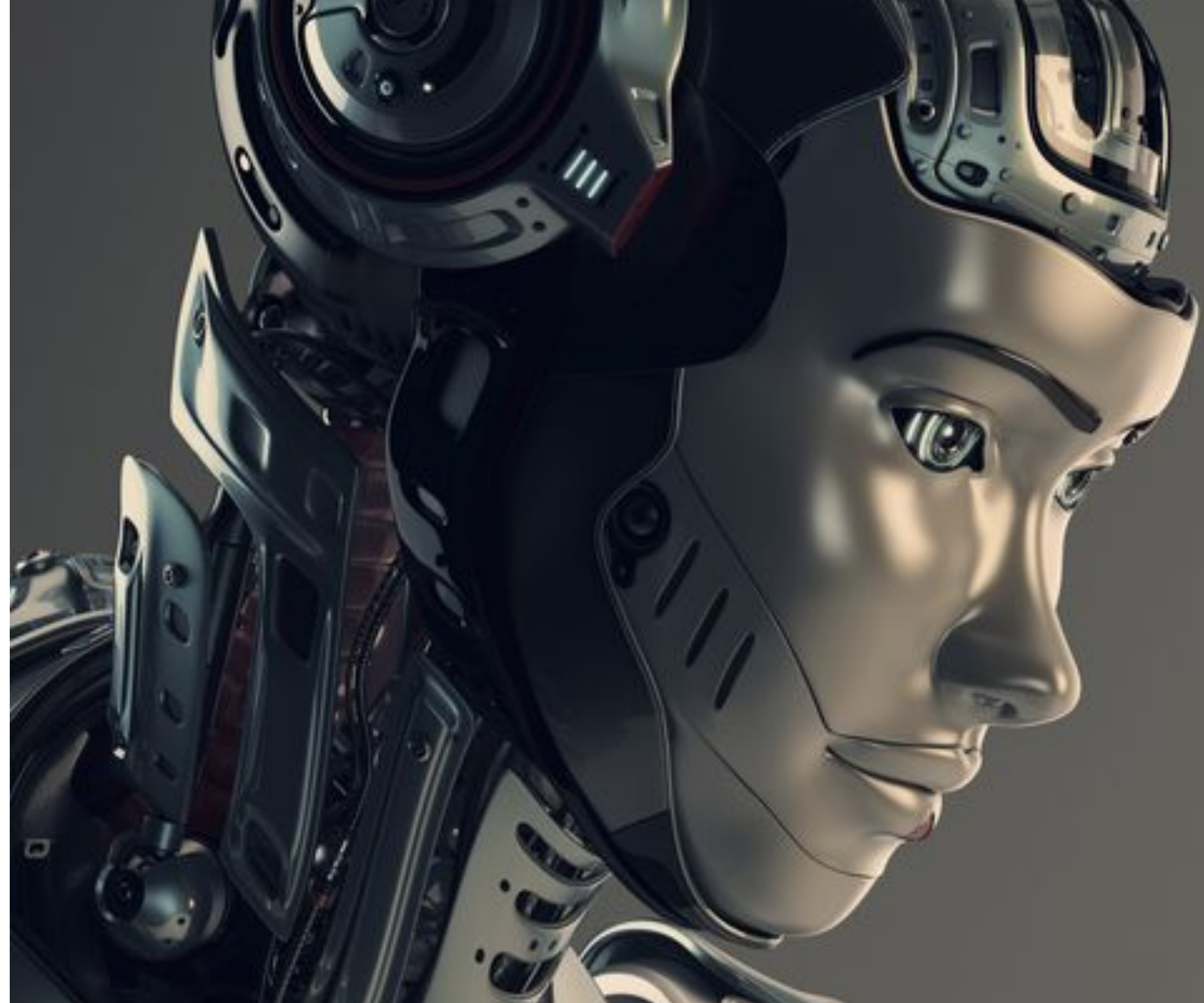


less Capture

c and emotional facial



Real-Time Motion
Capture using faceshift



HOW?

em·pa·thy - *noun*: the action of understanding, being aware of, being sensitive to, and vicariously experiencing the feelings, thoughts, and experiences of another of

Attitude



Listen



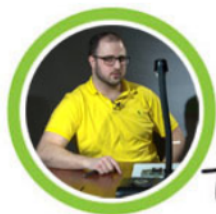
Empathy

Attitude

Listen

Learn





Tech Tip

How to Use a Document Camera

by Michelle Johnson, Educational Technologist

In this short video, Educational Technologist Daniel Block demonstrates the basic set-up and uses of the AVerVisionF-Series Document Camera. Educational Technology Services in G104 has two of these document cameras available for faculty to borrow. The document camera essentially replaces of the out-dated overhead projector with many great features including video and picture capture, annotation capabilities and 200x zoom with crisp, bright images.

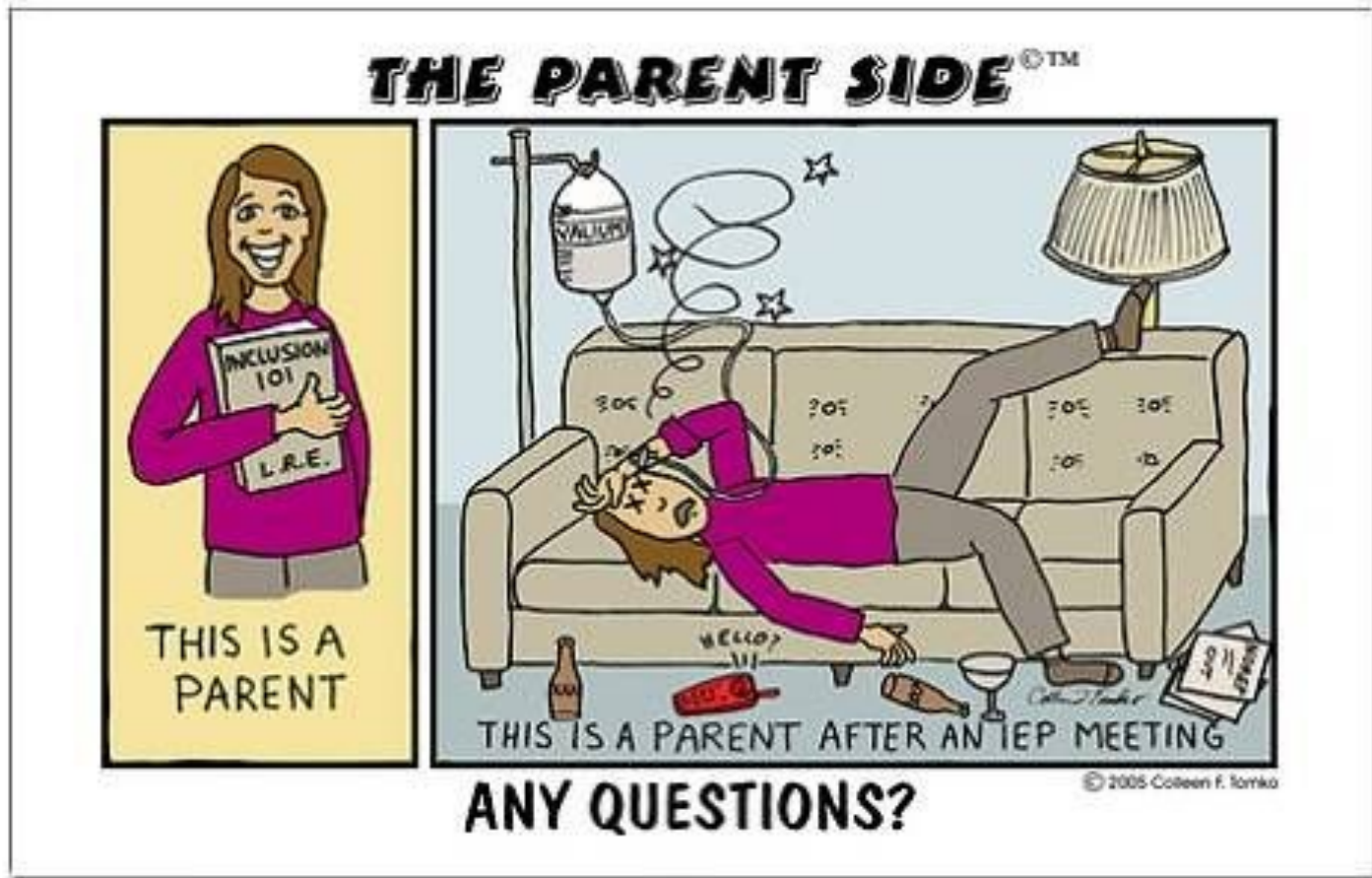
To book a document camera just send us an email to etsbookings@ufv.ca.

Daniel Block's Document Camera Tutorial

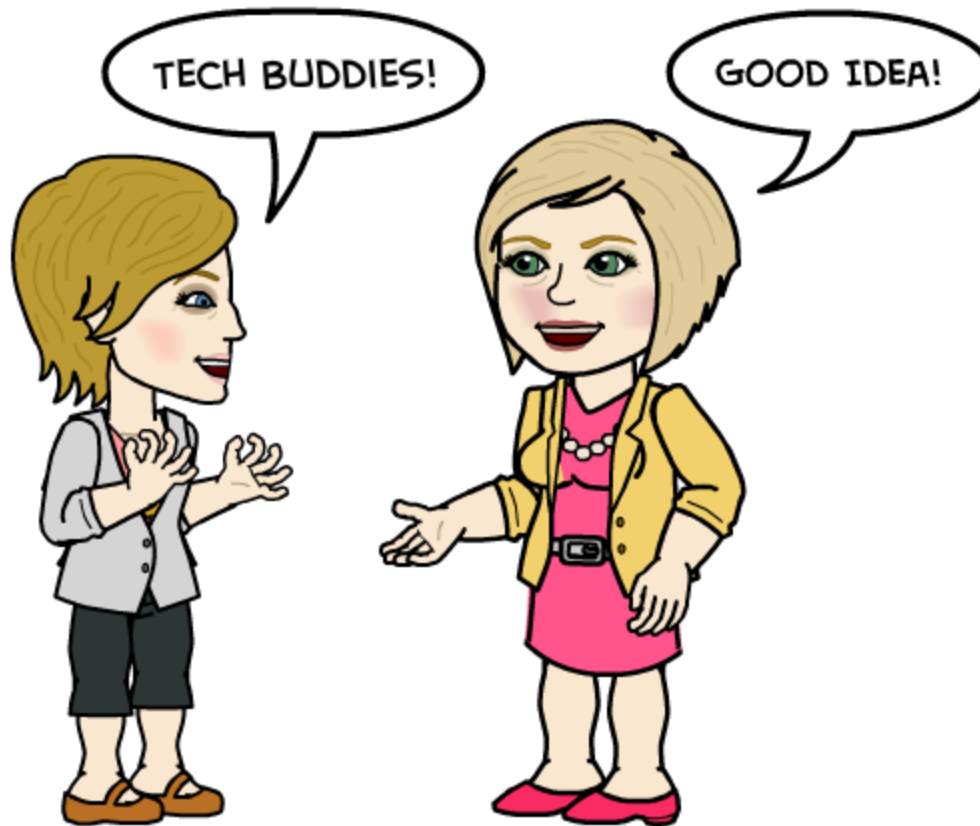
Video filmed and edited by Robin Pittman, Educational Technologist, Teaching & Learning.



Individual Education Plan (I.E.P.)









Does technology
overwhelm you?

Sign up for a new program
for new faculty.





**KEEP
CALM
IT'S NOT
ROCKET
SCIENCE**



Does technology overwhelm you?

Sign up for a new program
for new faculty.



Pen Tap Game

directions

- Find a partner
- Decide which person will be the listener and which person will be the tapper.
- The tapper thinks of a popular song and taps out the beat of the song on the table.
- The listener tries to the guess the song.
- Switch roles & repeat

Build Your “Tool Bag”

- Choose “tools” that you think you or your team might need and tuck them into the tool bag on your handout.
- What did you add?
- What’s missing?
- How can you develop these tools?
- What is one thing you can do tomorrow to start building better relationships with faculty.