



Shared IT Services for Higher Education & Research

Conference 2018

ERP Office

Opportunities and Value



Agenda

- Brief History of ERP Office
- Sector ERP Landscape
- Services and Benefits
- Governance and Funding
- Assessing Opportunities
- Current Initiatives

History of ERP Office

- ✓ 2013 Deloitte Report
- ✓ 2016 Sector ERP Strategy
- ✓ 2017 Business Engagement Report (BER)

Key Recommendations

Recommendation to establish an ERP office to facilitate collaboration

ERP in Higher Education

Core ERP Functions

Finance and Accounting

- Core Accounting
- Accounts Payable
- Accounts Receivable
- Treasury
- Budgeting
- Grants & Fund Management
- Project Accounting
- Asset Management
- Purchasing

Human Resources

- Payroll
- Benefit Management
- Time & Attendance
- Labour Relations
- Health & Safety
- Employee Development
- Planning & Management
- Budgeting

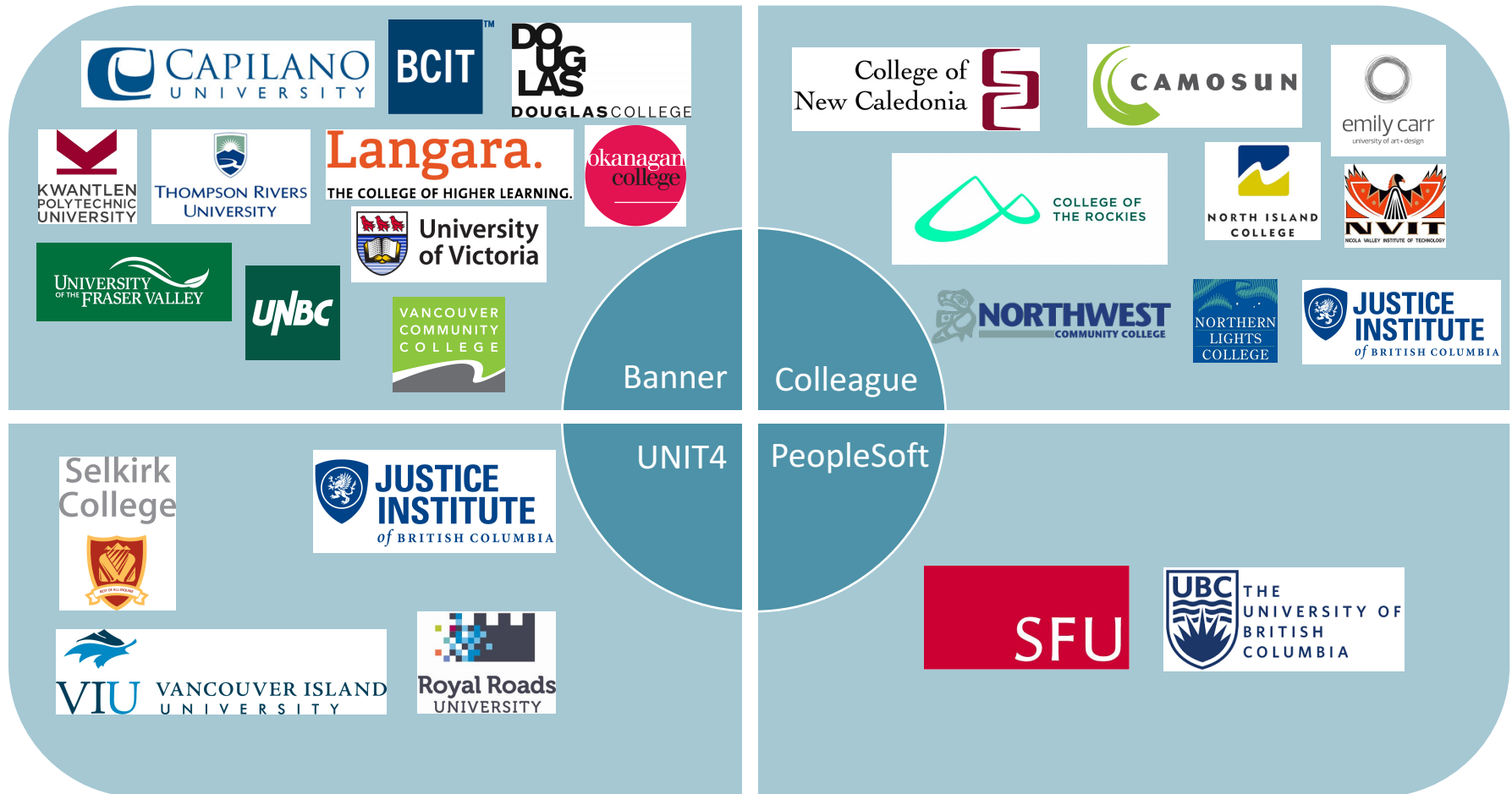
Student Information

- Recruitment and Admissions
- Records, Registration & Enrolment
- Student Finance
- Student Financial Aid
- Learning Paths & Advising
- Schedule Management
- Assessment & Outcomes
- Curriculum Management
- Student Affairs & Support Services

Common Services

- Workflow
- Document Management
- Operational Reporting
- Analytics
- Data Sharing
- Portals
- Mobile Access
- Security & Audit

Sector ERP Landscape



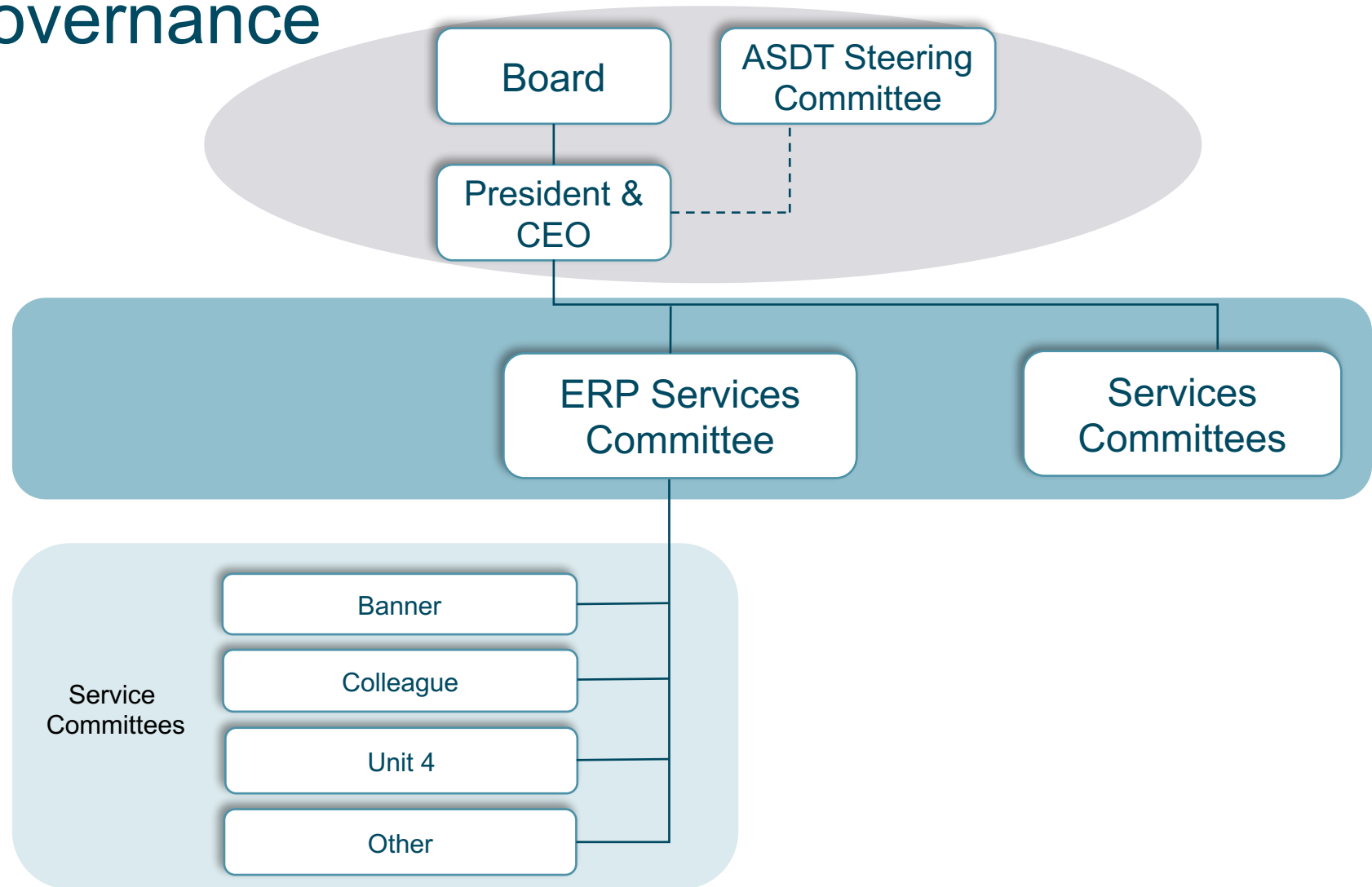
ERP Office Services

- 
- High-level strategic consultation
 - Online body of knowledge
 - Sector-wide contract negotiation
 - Simplified onboarding for common platforms
 - Coordination and management of shared initiatives

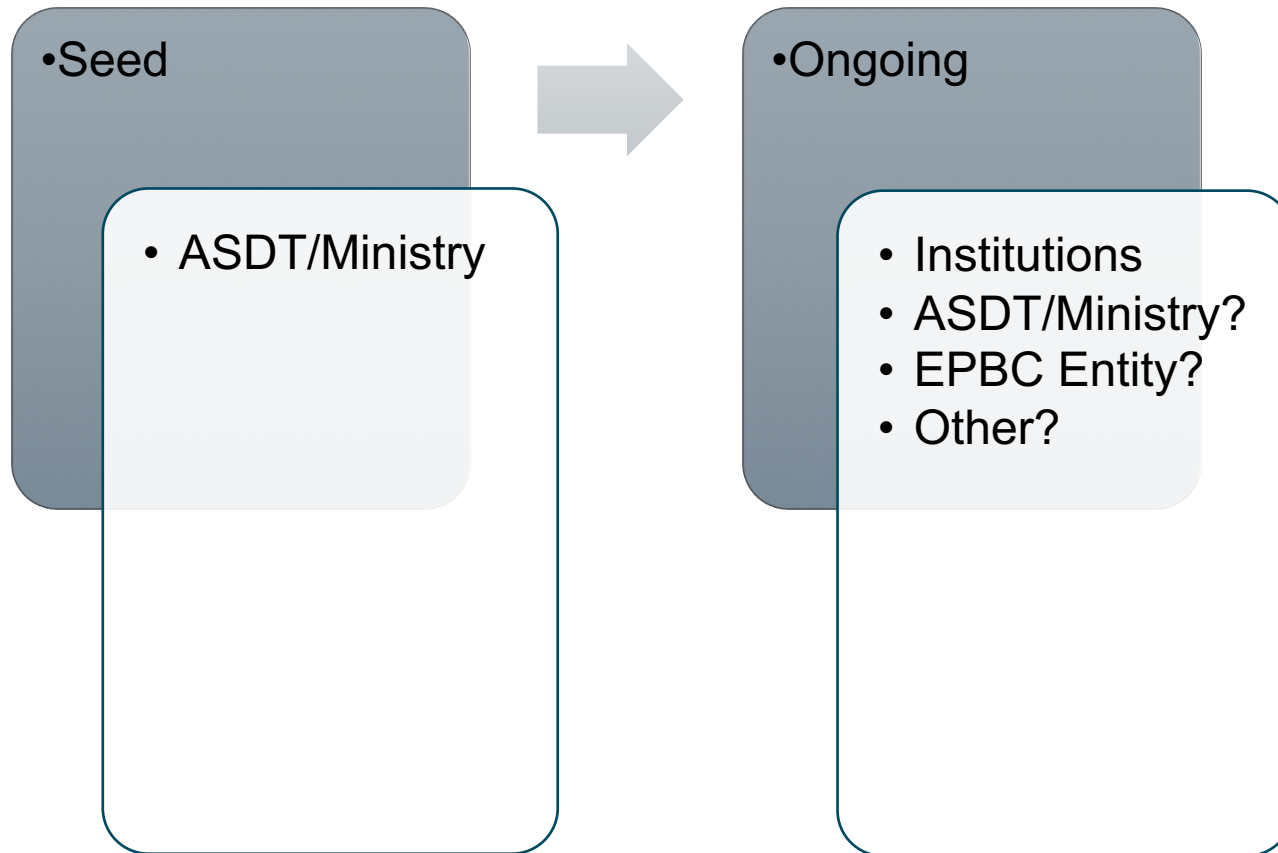
ERP Office Benefits



Governance



Funding



Assessing Opportunities



Met with
VPFO/CIO/Team
from 20/25 PSIs



- Provided background on ASDT/ERP Office
- Gathered current state and challenges
- Provided summary of findings to date
- Assessed interest in potential service options

Assessment Overview

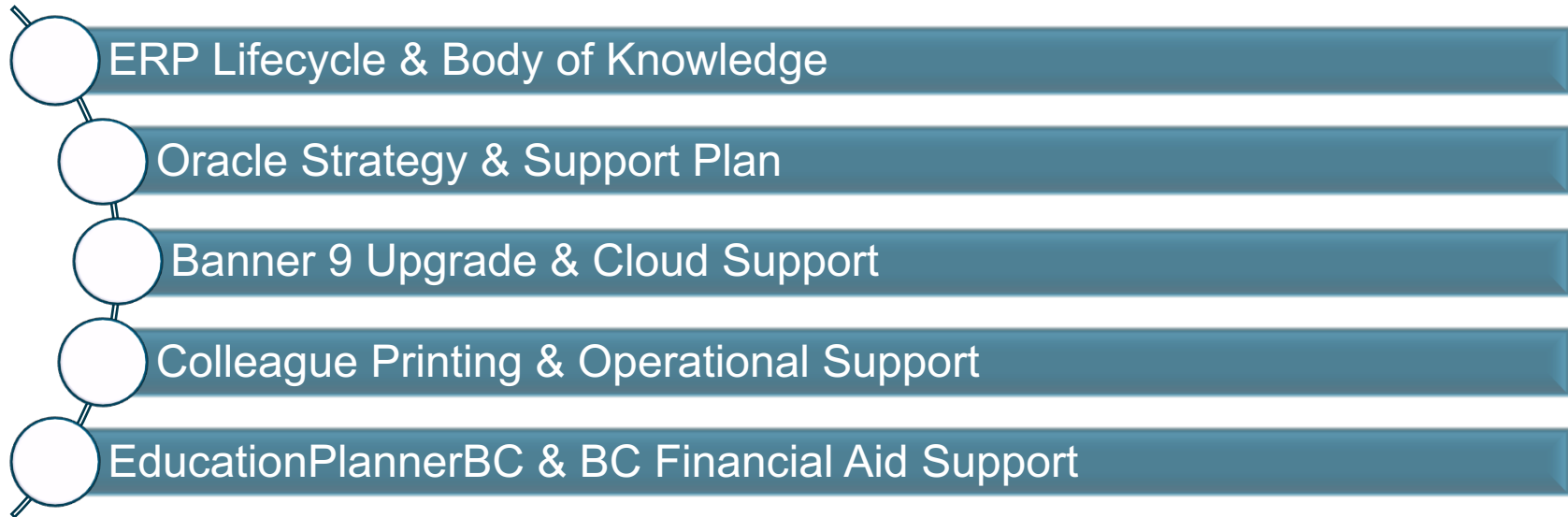
ERP Platform

- Market evolving, emerging alternatives incomplete
- Relatively stable as-is, re-evaluate in 2-3 years
- Struggling to leverage baseline functions
- Cloud becoming more prevalent

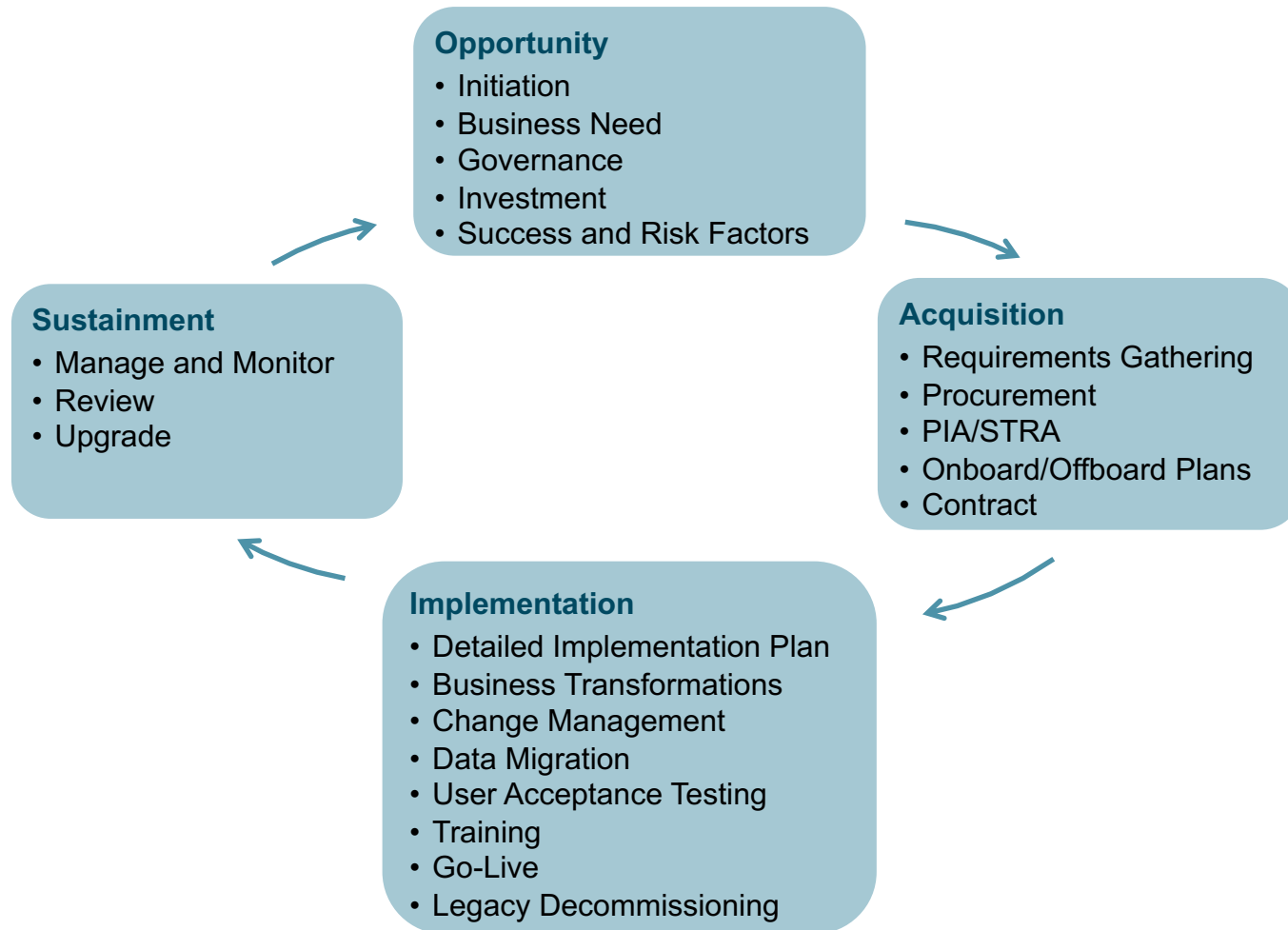
Human Resources

- Recruitment and retention always a challenge
- Privacy & security demanding more resources
- Smaller institutions have distinct disadvantage

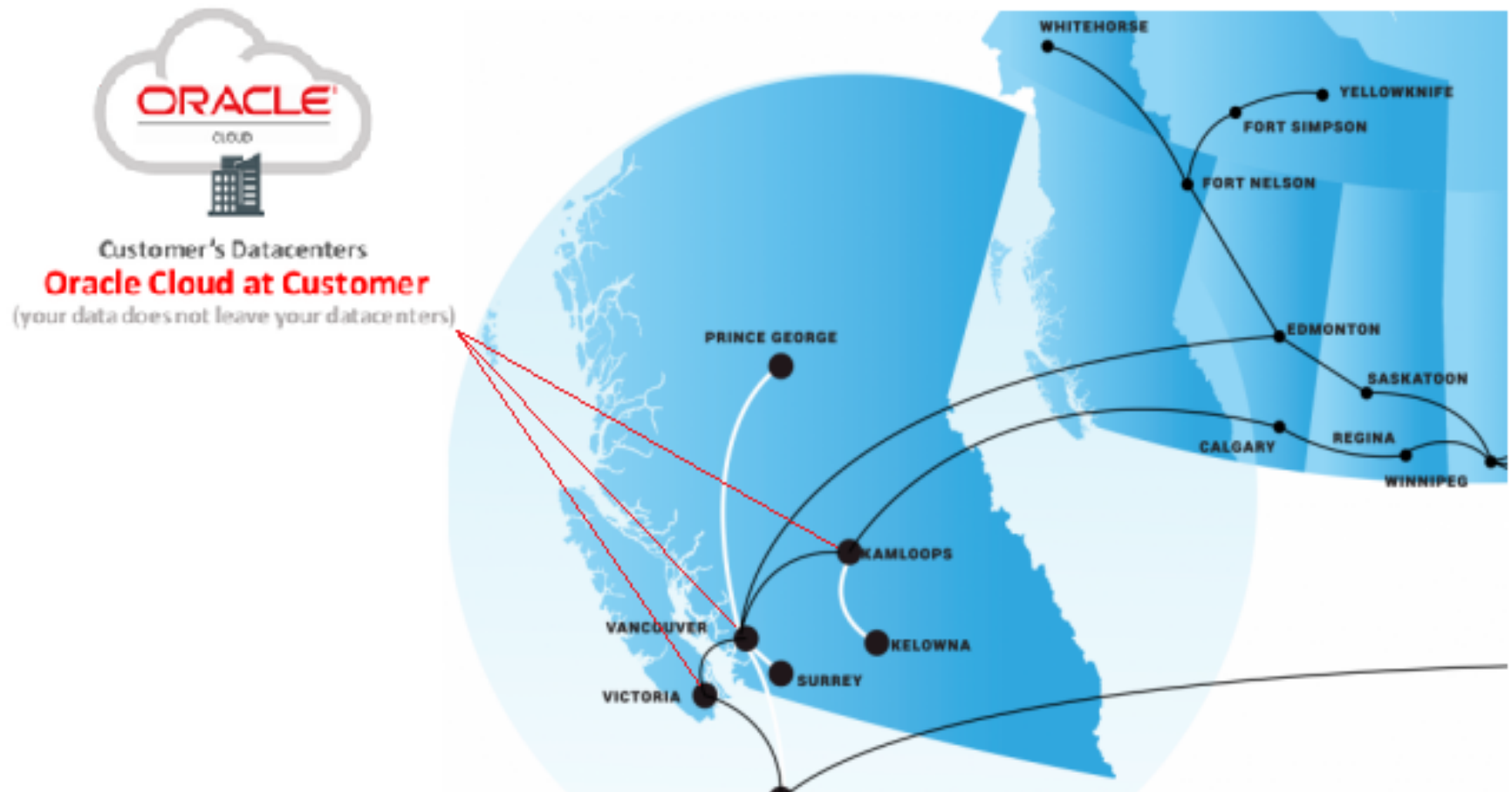
Initiatives



ERP Lifecycle & Body of Knowledge



Oracle Strategy & Support Plan



Banner 9 Upgrade Support

Background & Discussion

- Not “de-supported” but “sustaining support”
- Banner 9 primarily UI upgrade
- Banner 8 will run beyond December 2018

Upgrade Support

- Forms conversion guide & dev environment setup
- Skeleton forms
- Coordinated upgrade of bolt-on modules

Colleague Printing & Operational Support



EducationPlannerBC & BCFA Support



Questions & Support

BCNET Wiki

- <https://wiki.bc.net/atl-conf/display/BCNETERP/BCNET+Enterprise+Resource+Planning+Home>

Email or Phone

- erp@bc.net or garry.sagert@bc.net
- 250-881-0466